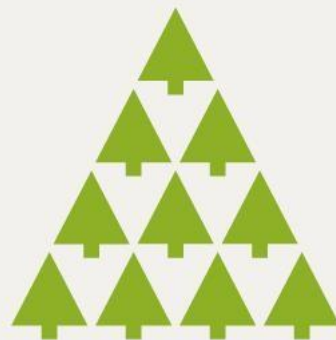


XIII European Mountain Convention

Shaping the future of mountain economies

15 - 18 October 2024 | Puigcerdà - Catalonia



Elena Górriz Mifsud

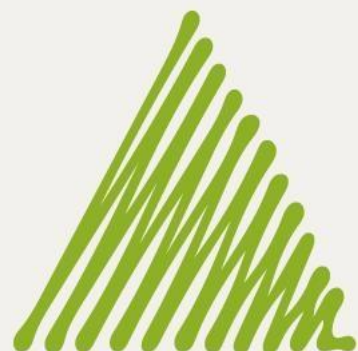
Senior researcher

Forest Science & Technology Center of Catalonia

Economic incentives for ecosystem services from extensive grazing

Workshop 6 - Working for nature: how to quantify and remunerate ecosystem services from agro-pastoral activities?

elena.gorriz@ctfc.cat



Extensive grazing as a Nature-Based Solution for wildfire regulation

- Wildfire risk in massifs and Wildland-Urban Interface areas → increasing
 - Defensive expenditure: recurrent fuel management interventions
 - Mechanical or grazing? Prevention as a “cost” or as a “productive firebreak”?
- Legal framework:
 - Massifs: strategic areas mapped
 - WUI: 25m around urban areas to be cleaned, responsibility on homeowners & subsidiarily the municipality
- Current value chain:
 - A few non-for-profit, voluntary-based, social integration initiatives of herbivorous (without shepherd)
 - Mainly meat. Few goat & sheep producers able to sell directly to client. Typically for export.
- Abandonment: every year 10% less shepherds



INITIATIVE 1 – MUNICIPAL AGREEMENTS w/SHEPHERDS FOR WUI

- Overview: local contracts to graze in buffers around municipality (=PES)
- Technical limitations:
 - Available shepherds
 - Initial & regular (less frequent) shrub cleaning
 - Initial available feed (poor): medium-term investment for shepherds vs annual contracts
 - Existing infrastructure & complementary fields
- Administrative aspects:
 - Pluriannual contract imply complex initial bureaucracy
 - Technician for pushing and surveilling the whole process (monitoring, landowners' permits...)
- Budget:
 - Between 200 €/ha (complementary activity) to 1100 €/ha (main activity)
 - Depends on previous housing, provision of corral, supplementary feed, etc



INITIATIVE 1 – MUNICIPAL AGREEMENTS w/SHEPHERDS FOR WUI



- Social acceptance!!!



Photo credits: Marc Rovellada



INITIATIVES 1 – MUNICIPAL AGREEMENTS WITH SHEPHERDS FOR WUI



- Preparatory shrub cleaning

Photo credits: Marc Rovellada



INITIATIVES 1 – MUNICIPAL AGREEMENTS WITH SHEPHERDS FOR WUI

- Environmental education



Photo credits: Marc Rovellada

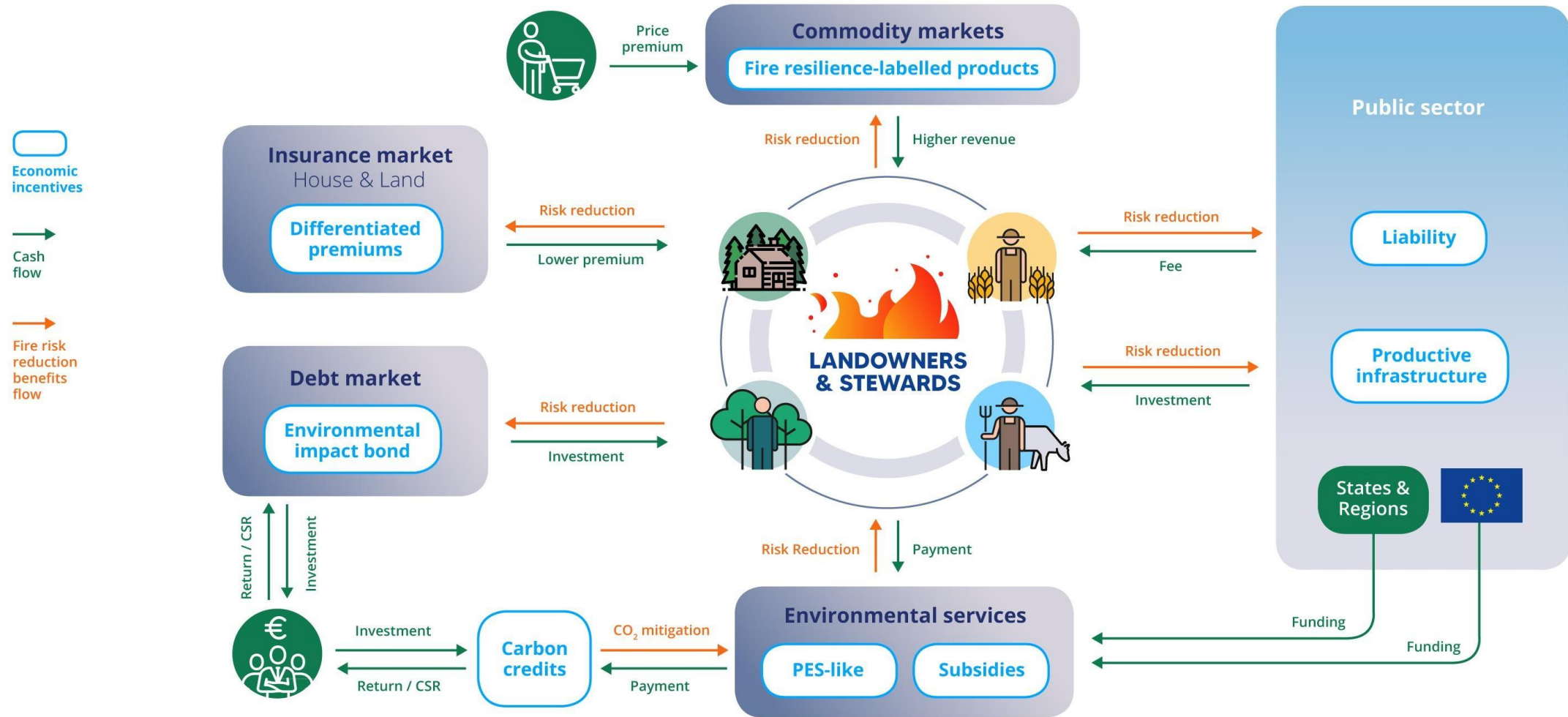


INITIATIVE 2 – FIRE FLOCKS IN MASSIFS

- Labelling & informing consumers
- Technical limitations:
 - Strategic zoning availability
 - Existing infrastructure & complementary fields
 - Strict technical requirements for shepherds → guarantee
 - Strong engagement for effectiveness or dropping
 - Demanding monitoring procedure
- Stakeholders:
 - Butchers' association of Girona (sales), Pau Costa Foundation (catalyzer)
- Budget:
 - Price premium limited so far
 - Entering into the big distribution channels? Capacity & ethical debate



Framing ECONOMIC INCENTIVES for WILDFIRE RISK mitigation

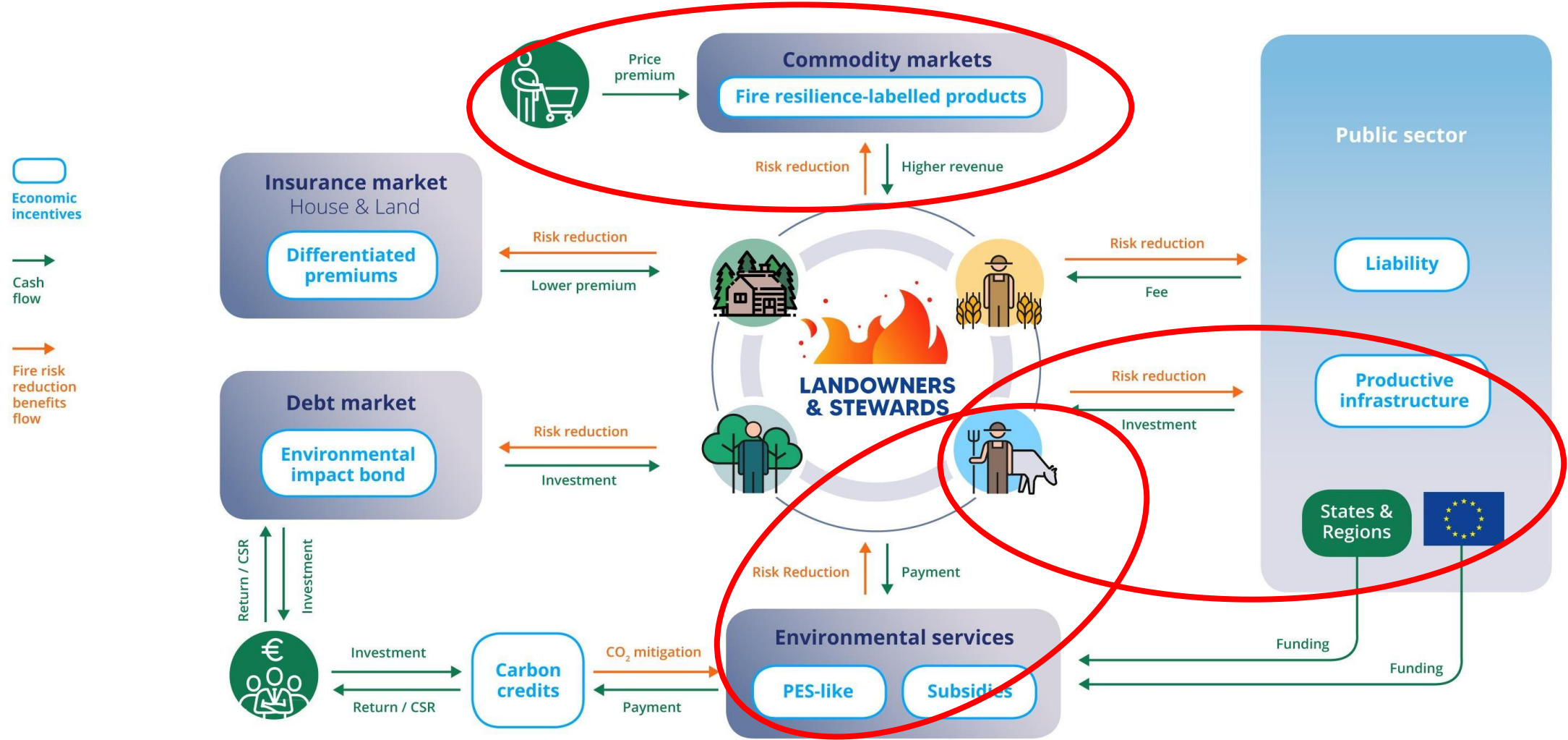


Wunder, S., Fraccaroli, C., Górriz-Mifsud, E., Varela, E. (2023). Can economic incentives help reducing wildfire risk?

FIRE-RES Policy Brief: <https://fire-res.eu/wp-content/uploads/2023/12/D3.1.pdf>



Framing ECONOMIC INCENTIVES for WILDFIRE RISK mitigation



Wunder, S., Fraccaroli, C., Górriz-Mifsud, E., Varela, E. (2023). Can economic incentives help reducing wildfire risk?

FIRE-RES Policy Brief: <https://fire-res.eu/wp-content/uploads/2023/12/D3.1.pdf>



RESULTS & IMPACTS

- Social change of shepherds' role:
 - they are important local actors!
 - Approaching primary sector to urbanites
 - Quality km0 food.
- Ensuring & complementing shepherds' income: safety net but bureaucratic
- Reducing fuel – monitoring dependant
- Some initial, punctual social conflicts in WUI



Working for nature: how to quantify and remunerate ecosystem services from agro-pastoral activities?

Lessons learned & recommendations

- KEY SUCCESS FACTORS:

- Dignify the shepherd role / Recovery of previous primary sector jobs
- Available examples to get inspired & adapt
- Municipal technicians catalysing grazing permits with private forest owners
- Municipal facilitation of infrastructure & permits

- CHALLENGES:

- Shepherds' willingness to change their “productive” management into “service” provider
- Fair € rewards to allow for 1.5-2 shepherds' livelihoods



Working for nature: how to quantify and remunerate ecosystem services from agro-pastoral activities?

Lessons learned & recommendations

• POLICY RECOMMENDATIONS:

- Supra-municipality technical support for small municipalities without environmental technician
- Earmarked taxes for WUI homeowners (=main beneficiaries)
- Policy interest if medium-term savings
- Payments commensurated to additional working effort & value chain options & available infrastructure
- Citizen's awareness prior to introduction
- Combining EU CAP aids with massif or WUI is close to impossible due to CAP regulations → less attractive for shepherds
- Label support
- Flexibility in public contract regulation to adapt



Gràcies
Gracias
Thank you
Merci

